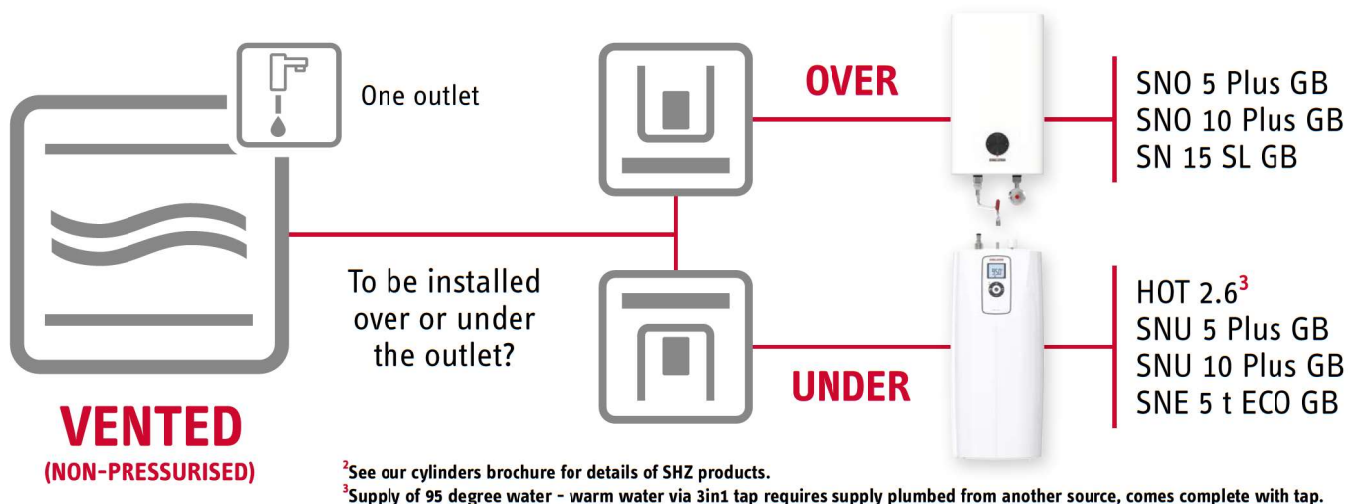
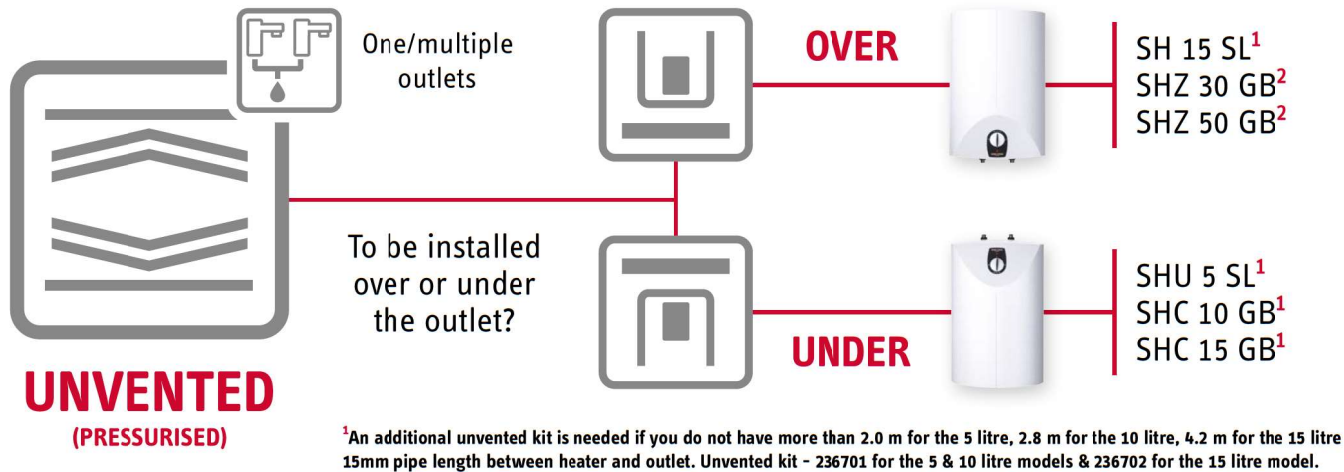


Which small stored water heater? Our guide to our full range.

Choose unvented units for multiple outlets. Vented units are space saving and suitable for one outlet, but must be used with special taps. Note: All our 5-15 litre unvented units are supplied with a pressure relief valve.



- › Choose 5 litre models for a basin. The t ECO model features an onboard controller/timer.
- › Choose 10 litre models or the SNE 5 t ECO for 2 basins or a kitchen sink (this model can store water at higher temperatures than other 5 litre models for greater mixed volume).
- › Choose 15 litres for high usage sinks or up to 3 basins.
- › Choose 30 litres plus for cleaners' sinks, light commercial.²

For more detail on the wider range go to:
www.stiebel-eltron.co.uk/stored

Do I need an additional unvented kit for my unvented water heater?

An additional kit is needed if you do not have sufficient pipe between heater and outlet. The diagram below shows the minimum 15mm pipe length required. If you do not have this choose the unvented kit indicated for your size of heater below.

