

LSWP 315-0,9 D

ACCESSORIES

PRODUCT-NO.: 207476

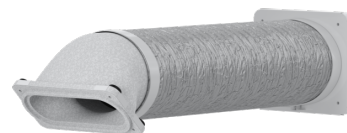
The main features

Sound insulated air hose for integral ventilation units (with R290)

Quick and safe installation thanks to the quick adaptor connections made of EPS

Tight and thermal bridge-free connection of the outdoor and exhaust air

45 degree adaptor for lower pressure loss

**LSWP 315-0,7 D**

Product-No.: 207475

**LSWP 315-1,5 D**

Product-No.: 207477

**LSWP 315-3 D**

Product-No.: 207478



Type	LSWP 315-0,7 D	LSWP 315-0,9 D	LSWP 315-1,5 D
Part no.	207475	207476	207477

Technical data

Nominal diameter	315 mm	315 mm	315 mm
Length	700 mm	900 mm	1500 mm
Thermal insulation thickness	50 mm	50 mm	50 mm
Colour of air hose	grey	grey	grey



Type	LSWP 315-3 D
Part no.	207478

Technical data

Nominal diameter	315 mm
Length	3000 mm
Thermal insulation thickness	50 mm
Colour of air hose	grey

Contact information

Do you have additional questions? Then please do not hesitate to contact us, we would be only too happy to help:

Call 0151 346 2300

Or send an e-mail to

sales@stiebel-eltron.co.uk

Only a qualified contractor should carry out the installation, commissioning, maintenance and repair of this appliance. Where applicable and prior to installation the electricity and/or water utility companies should be notified of your intention to install the product.