

LA 100 A

DECENTRALISED

PRODUCT-NO.: 205771

Turn every space into an oasis of fresh air

This fan unit is highly attuned to stale air. To be precise, the appliance is equipped with a sensor. It determines when the room needs ventilating. Humidity and the prevailing temperature also influence the exchange of air.

Bringing flexibility to air exchange

For extra convenience, all models are equipped with switch-on delay and run-on time functions, and can also be extended with a humidity sensor. These allow you to define when air exchange should start and stop. This is a useful feature for when you need to leave home shortly after showering or cooking. When you return, air with just the right humidity will be waiting to greet you.



The main features

Decentralised extractor for rooms with and without windows

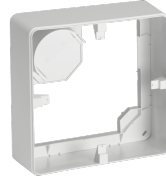
For use in traditional extract air areas, such as the bathroom, kitchen and WC

Modernisation solution that is easy to install

Ideal for combination with our decentralised ventilation units

Energy efficient EC fan for low noise pollution at high air flow rates

Set-Components **1**



Type	LA 100 G-A
Product set	LA 100 A

Technical data

Height	270 mm
Width	270 mm
Depth	136 mm

Set-Components **2**

Type	LA 100 VE
Product set	LA 100 A

Technical data

Max. power consumption	15.3 W
Power supply	1/N 230 V 50 Hz
Height	260 mm
Width	260 mm
Depth	50 mm
Air flow rate	20/30/40/50/60/100 m ³ /h

Contact information

Do you have additional questions? Then please do not hesitate to contact us, we would be only too happy to help:

Call 0151 346 2300

Or send an e-mail to

sales@stiebel-eltron.co.uk

Only a qualified contractor should carry out the installation, commissioning, maintenance and repair of this appliance. Where applicable and prior to installation the electricity and/or water utility companies should be notified of your intention to install the product.